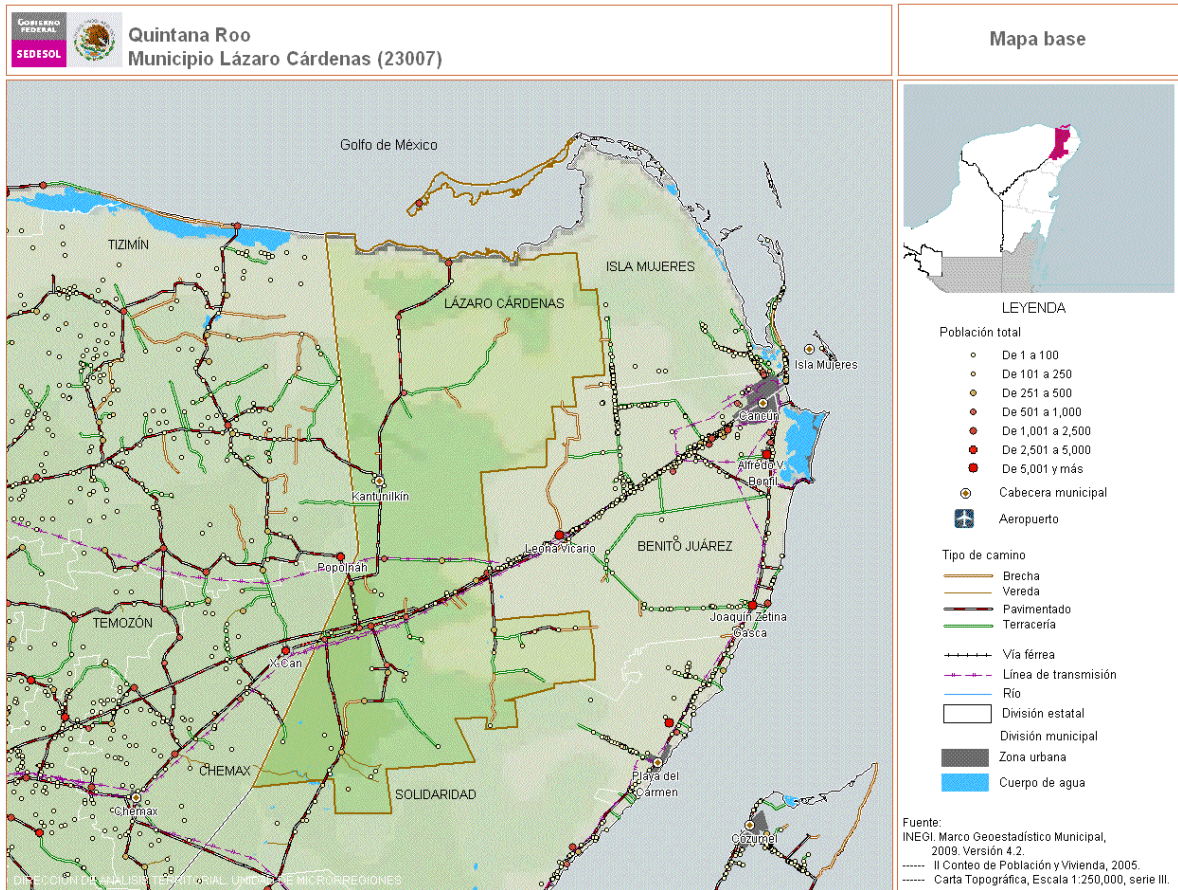


JUSTIFICATION FOR THE CREATION OF A SECONDARY SCHOOL

YPM A.C. (Asociación Civil), Mexico owes its existence to concern for the area inhabited by Mayan people in this region known as the Zona Maya, or Mayan Zone. It is located in the municipality known as Lazaro Cardenas, which actually consists of 36 localities. Together they have a population of 25,333 according to the 2010 census.



Sources of income in this Maya Zone consist mainly of the following:

1. Growing and selling plants
2. Charcoal production
3. Maize cultivation
4. Ecology tourism
5. Latex production
6. Fishing
7. Others – which are mostly small and only for the benefit of the family, not intended to be business operations.

The languages of this region:

- Maya is still spoken here, and some elementary schools include classes in this language in their curricula so that the students can learn and take classes in their birth language.
- Spanish is spoken as well
- A small percentage speak English also

Educational levels available:

1. The municipal region has one Special Education school
2. There are 34 pre-schools (3-5 year olds)
3. There are 41 primary schools (6-11 year olds)
4. There are 13 secondary (Junior high level – 12-14 year olds)
5. There are 3 high school level schools (called Preparatory Schools - 15-17 year olds)
6. And 1 technical school, Tec-Milenio

Note: When we say that there are 36 localities, that means that among these there are communities that have only preschool and primary school. Also, the primary school may only go up to grade 3, and not to grade 5 or 6 as is customary. Students who might wish to advance to secondary school (our Junior High equivalent) must walk or ride a bicycle, or in rare instances go by car.

A HIGH SCHOOL IN LEONA VICARIO?**ANALYSIS**

The number of secondary schools (Jr. High) (13), contrasted with the number of preparatory schools (High School) (3) tells us that the number of graduates of the Jr. High level schools is 10 times that of the high school level schools. In consequence we have:

- Students who do not continue their education because of lack of spaces available at the next level.
- Students who will not continue for economic reasons. If they cannot find available slots in their own zone they would have to move to the nearest city, which has economic implications such as having to rent a house, food costs, tuition, monthly expenses, books and materials, and personal expenditures.
- Students who will not continue studying because they have decided to go to work to help their parents with household expenses or with the education of their siblings.

BENEFITS

- The most distant village in the area surrounding Leona Vicario is only one hour away, so that those who wish to attend the school can get from their point of departure to the school with no problem at all, and wouldn't have additional rental or food expenses.
- Registration fees and monthly payments would be reduced by 60% compared to the schools in the city.
- We would have 90 available spaces for students, which would keep students of limited means from falling behind educationally.
- There is the possibility of assistance by means of scholarships.
- And we would have the satisfaction of knowing that, in the not-too-distant future, right here in the area we will have future doctors, architects, attorneys, engineers or other, Maya, specialties.

CONCLUSIONS

Funding a preparatory school in the Maya Zone of the state of Quintana Roo will allow Maya families to motivate their children to continue their education. YPM A.C. Mexico hopes to offer educational opportunities to Maya youth who at the moment cannot advance in school for lack of available spaces. These young people can be a generation with better work opportunities and better social and economic position if we only believe in them and give them the opportunities that they do not have today. The need is real, and it is in our hands to be part of the solution.

